

**FEATURES**

- PIR Sensor for max 12M Height
- Bi-level Dimmable, Daylight Threshold
- Remote control

**HD07VR-PHF-1****HD06R****TECHNICAL DATA****PIR Information**

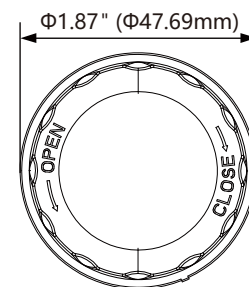
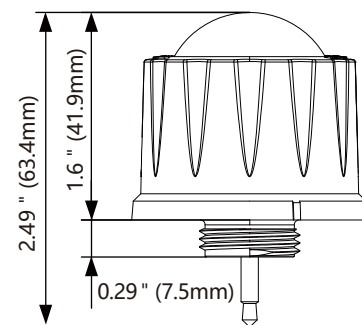
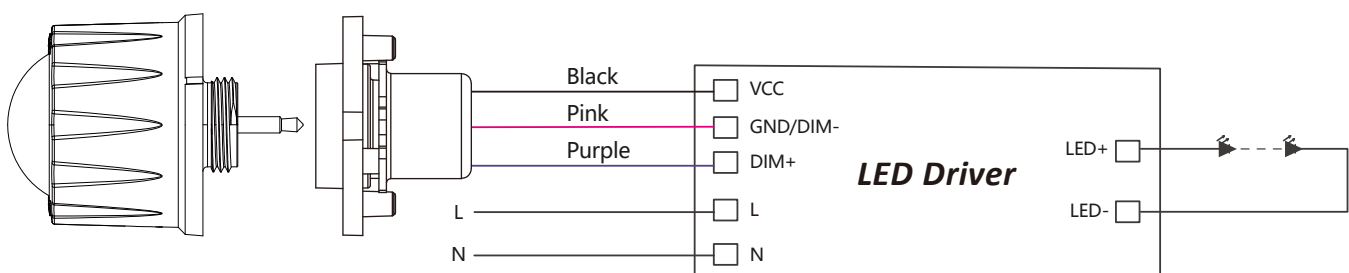
Installation Height	Max.ø12m/39.37ft
Detection Range	Radius, 2-4m/6.58-13.12ft
Stand-by power	<15mA

**Electrical Specifications**

Operating Voltage	10.5-15V DC
Output control	DIM 0-10V
Working Temp	-20°C~+60°C

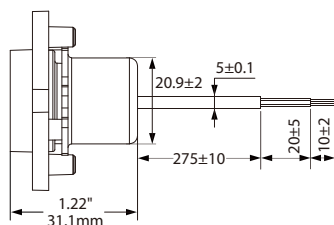
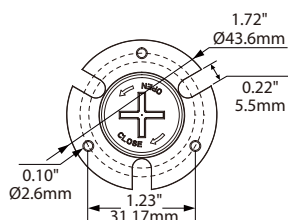
**Sensor Parameter**

Control Device	Remote Control #HD06R( purchase separately)
Detection Area	25%/50%/75%/100%
Holdtime	5s/30s/1min/3min/5min/10min/20min/30min
Daylight Threshold	2Lux/10Lux/30Lux/50Lux/80Lux/120Lux/Disable
Stand-by Period	0s/10s/30s/1min/5min/10min/30min/60min+∞
Stand-by Dimming Level	10%/20%/30%/50%
Daylight Priority Function	1. STANDBY DIM LEVEL as any of 10% 20% 30% 2. STANDBY PERIOD as infinite 3. DAYLIGHT as any of 30Lux / 50Lux / 80Lux / 120Lux / 200Lux / 250Lux / 300Lux / 350Lux / 400Lux

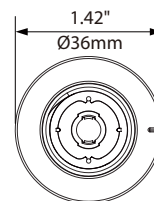
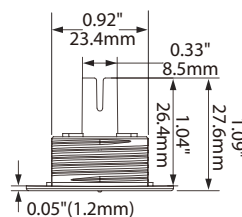
**DIMENSIONS****WIRING DIAGRAM**

**RECEPTACLE OPTIONS****HD07VRA 2**

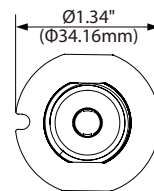
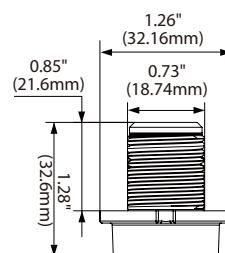
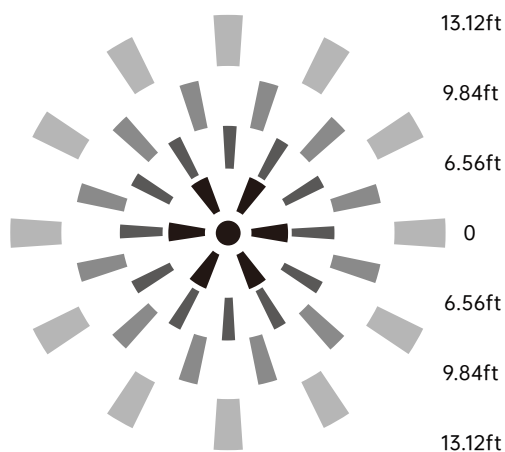
Black/white VCC, Pink GND/DIM-, Purple DIM+  
Length: 330mm

**HD07VRA-3-1**

Yellow VCC, Pink GND/DIM-, Purple DIM+  
Length: 300mm

**HD07VRA-5-1**

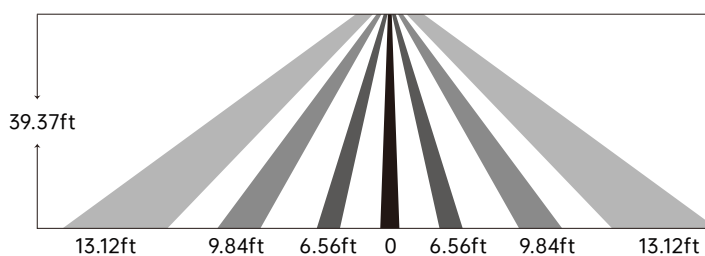
Black/white VCC, Pink GND/DIM-, Purple DIM+  
Length: 305mm

**DETECTION COVERAGE****Mounting Height**

≤12m/39.37ft Ceiling Mounted

**Detection Range**

Radius, 2-4m/6.58-13.12ft Ceiling Mounted



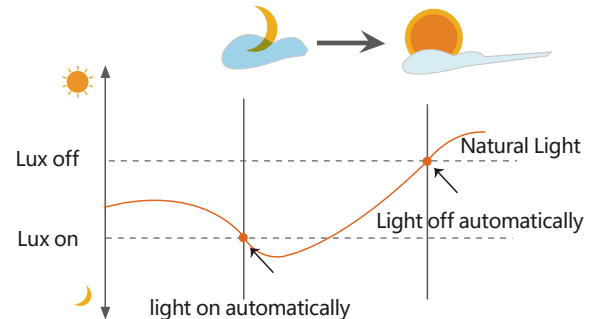
## PERFORMANCE

### 1. Dusk/Dawn function

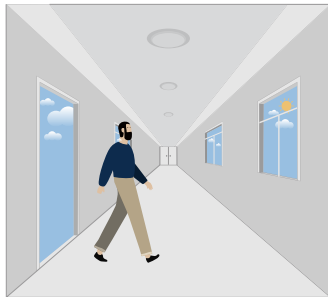
The sensor is able to differentiate artificial light brightness from natural light after installed inside the fixture, and automatically turn off light when ambient brightness exceeds preset lux level.

*Please follow below setting steps to perform this function:*

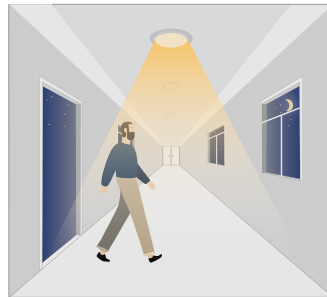
1. STANDBY DIM LEVEL as any of 10% 20% 30%
2. STANDBY PERIOD as infinite
3. DAYLIGHT as any of 30Lux / 50Lux / 80Lux / 120Lux / 200Lux / 250Lux / 300Lux / 350Lux / 400Lux



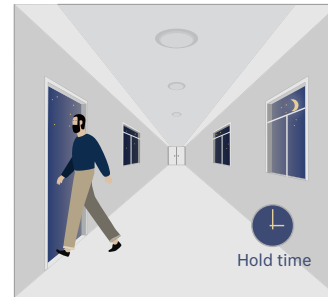
### 2. Automatically ON/OFF function



With sufficient daylight, even when motion detected, light remains OFF.



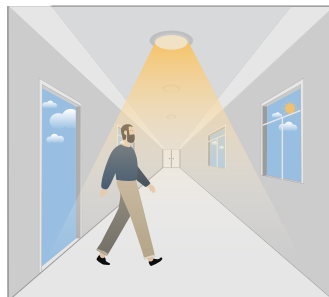
With insufficient daylight, the sensor turns light ON when motion gets detected.



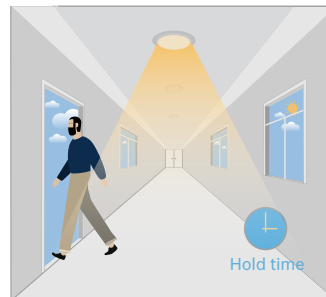
The sensor turns OFF light automatically after the holdtime when there's no motion detected.

### 3. Daylight Disable

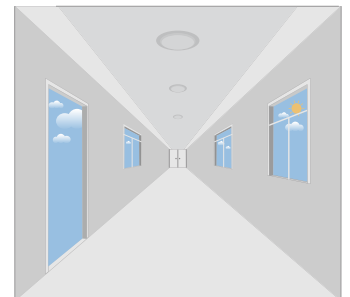
When daylight threshold is preset as "disable", the sensor turns light ON when motion gets detected, and OFF after holdtime.



The sensor turns light ON when motion gets detected.

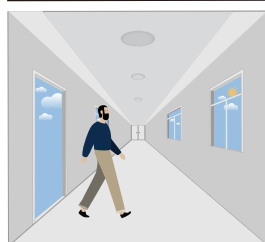


The sensor keeps light ON for holdtime period after motion leaves.

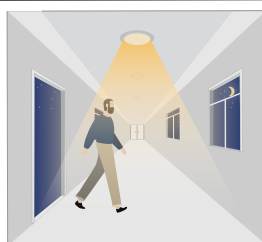


The sensor turns OFF light automatically after the holdtime.

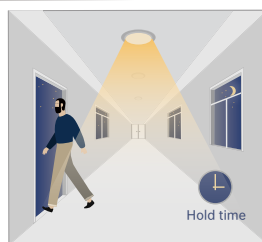
### 4. Corridor Function, Bi-level Dimmable



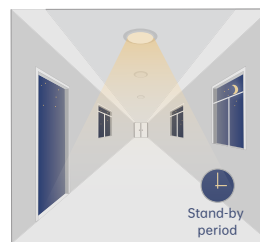
With sufficient daylight, the sensor keeps light ON even motion gets detected.



With insufficient daylight, the sensor turns light ON when motion gets detected.



After there's no motion detected, the sensor keeps light ON 100% for holdtime.



After holdtime, sensor dims light to standby dimming level for standby period.



The sensor turns OFF light automatically after the standby period when there's no motion detected.

**FACTORY SETTING**

1. Detection Area - 100%
2. Holdtime - 5S
3. Daylight Threshold - disable
4. Standby Period - 0S
5. Standby Dimming Level - 10%

**Attention**

1. The sensor should be installed by qualified electrician and ensure power is OFF before installation.
2. Please read the instruction carefully before using the product and keep it well for other users to read any time.
3. We reserve the right to modify any incorrect text, image and technical parameters.
4. Any unauthorized modification is forbidden. Otherwise all guarantees will be immediately invalid.
5. Product could be optimized without prior notice.

**APPLICATION NOTES**

1. Suitable for indoor application, half/completely outdoor environment conditions might trigger the sensor.
2. Suitable for ceiling mount installation, adjust sensitivity properly if it's installed on side-wall because it gets more sensitive.
3. PIR sensor can't be placed inside any material, fresnel lens must completely exposed in air.
4. Fresnel lens of the PIR sensor must be lower than light fixture.
5. Not suitable environment if there's sudden changed temperature of airflow for PIR sensor.
6. Not suitable environment if there's shelves blocking between the sensor and presence area.
7. Detection area options may NOT working obviously because it works depends on fresnel lens, it's physically defined.
8. Detection distance performance works better when moving parallelly than moving towards to the sensor.
9. Daylight testing delivered in bright day without shadow or specially designed lampshade or lens.
10. Dimming performance differs when connected to different drivers; If the driver can't completely turn OFF, sensor can't either.
11. Input power voltage must be stable with float less than 10%.
12. The first time powered ON sensor, light will be ON 100% for about 45S then dims to standby level or OFF.
13. Distance detection is delivered by testing person about 165cm in open area as reference, the result differs by size and speed of moving objects, mounting height and real-life situation.