

PROJECT
TYPE
CATALOG #

# 20-HBLASR

SENSOR READY ADJUSTABLE HIGH BAY LUMEN & KELVIN SELECTABLE

## HOUSING

- Premium powder-coat, steel, white housing.

## ELECTRICAL

- Operating temperature (ambient): -40°C to 50°C (-40°F to 122°F).
- Universal 120-277V AC voltage (50-60Hz) is standard.
- Optics rotate up to 135°.
- Screw in sensor ready. (Sensor and remote control sold separately).
- Emergency driver option available.
- 347-480 achieved with step-down transformer.
- 0-10VDC dimming drivers are standard.
- Input transient surge protection = 6kV.
- PF > 0.9; THD < 20%.

## OPTICAL SYSTEM

- Polycarbonate lens.
- Field Selectable 4000k (neutral white) and 5000k (cool white) color temperatures\*.
- Tri-Lumens selectable delivers 9,000 to 30,000 nominal lumens (see lumen tables on page 3)\*\*.
- Remote Control required to change factory sensor settings (see default settings on page 2).
- Long-life LEDs provide 148,000 hours of operation with at least 70% of initial lumen output (L70), and 44,000 hours with at least 90% of initial lumen output (L90)\*\*\*.
- LED color maintenance < 0.0035 chromaticity shift ( $\Delta u'v'$ ) over the initial 6,000 hours of operation.
- Color rendering index > 80%.

## MOUNTING

- Chain-mount kit (includes v-hooks, 1-meter long chain) are standard.
- Optional surface mounting kit provides attachment to solid surfaces\*\*\*\*.
- Optional pendant mounting kit provides pendant attachment to 1/2" rigid conduit\*\*\*\*.

## CODE COMPLIANCE

- cULus listed for damp locations.
- Complies with FCC part 15, class A.

## WARRANTY

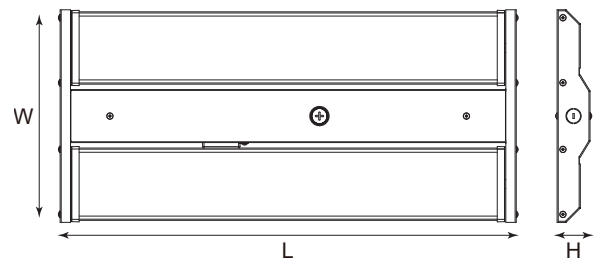
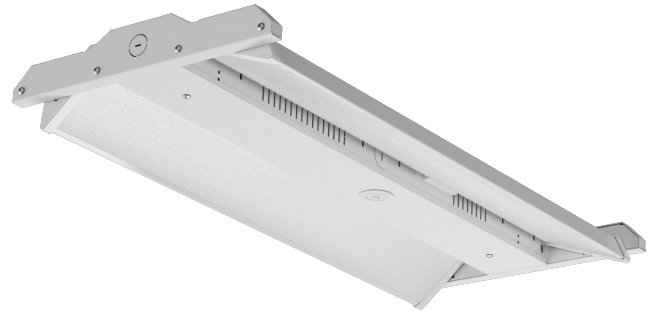
- 5-year warranty on all electronics and housing.

\* Default kelvin temperature = 4000k.

\*\* Default power setting = highest lumen output.

\*\*\*L70 & L90 hours are IES TM-21-11 calculated hours.

\*\*\*\* Surface and pendant mount kits are not compatible with either UNC or EM options.



Model	Size (inches) & Weight (lbs)			
	L (in)	W (in)	H (in)	Weight
20-HBLASR-15129L-4K5K	25.8	12.1	1.9	7.5
20-HBLASR-241815L-4K5K	25.8	12.1	1.9	7.5
20-HBLASR-302418L-4K5K	25.8	12.1	1.9	7.5



## PRODUCT PARAMETERS

SERIES	NOMINAL LUMEN OUTPUT (Selectable)	KELVIN (Selectable)	INPUT VOLTAGE	EMERGENCY DRIVER
20-HBLASR	15129L = 15,000lm / 12,000lm / 9,000lm 241815L = 24,000lm / 18,000lm / 15,000lm 302418L = 30,000lm / 24,000lm / 18,000lm	4K5K	UNC* 347-480V Blank 120-277V	EM10 = 10W Emergency Driver EM13 = 13W Emergency Driver EM25 = 25W Emergency Driver Blank = No Emergency Driver

\* UNC option no compatible with EM



PROJECT
TYPE
CATALOG #

# 20-HBLASR

SENSOR READY ADJUSTABLE HIGH BAY LUMEN & KELVIN SELECTABLE

## ACCESSORIES (order separately)

### Sensor

- 20-HD07VR-PH-1 = Passive infrared sensor - maximum mounting height = 39FT, factory settings: detection area =100%, hold time = 5 sec, stand-by period = 0 sec, stand-by dimming level = 10%, daylight threshold = disabled
- 20-HD07VR-MH-B-1 = Microwave step-dimming sensor - maximum mounting height = 49FT, factory settings: detection area =100%, hold time = 5 sec, stand-by period = 0 sec, stand-by dimming level = 10%, daylight threshold = disabled
- 20-HD05R = Remote control for 20-HD07VR-PH-1 & 20-HD07VR-MH-B-1 (required to change factory settings)

### Wire Guard

- 20-HBLASR-WG-24X4 = WIRE GUARD FOR ALL 20-HBLASR MODELS

### Mounting Option

- 20-HBLASR-SMK = SURFACE MOUNT KIT FOR ALL 20-HBLASR MODELS\*
- 20-HBLASR-PMK = PENDANT MOUNT KIT FOR ALL 20-HBLASR MODELS\*

\* SMK and PMK are not compatible with UNC and EM drivers.

### Remote Mount EM Drivers

- 20-BLEM-CP-10C = 10W EMERGENCY DRIVER WITH CONDUIT - EM10
- 20-BLEM-CP-13C = 13W EMERGENCY DRIVER WITH CONDUIT - EM13

## COMPATIBLE EMERGENCY DRIVERS - INSTALLED

Emergency Driver Part Number	EM10		EM13		EM25	
Model	Watts	EM Lumens	Watts	EM Lumens	Watts	EM Lumens
20-HBLASR-15129L-4K5K	10	1420	13	1846	25	3550
20-HBLASR-241815L-4K5K	10	1440	13	1872	25	3600
20-HBLASR-302418L-4K5K	10	1440	13	1872	25	3600

## COMPATIBLE DIMMERS & CONTROLS

Manufacturer	Model Number	Dimmer Range	Load Switching Capacity
Leviton	IP710-LFZ	10%-100%	1200W
Lutron	DVSTV	10%-100%	450W

PROJECT
TYPE
CATALOG #

# 20-HBLASR

SENSOR READY ADJUSTABLE HIGH BAY LUMEN & KELVIN SELECTABLE

## ELECTRICAL DATA

Series	Measurements	Low Lumens		Mid Lumens		High Lumens	
		4000k	5000k	4000k	5000k	4000k	5000k
20-HBLASR-15129L-4K5K	Lumens	9,935	9,886	12,681	12,531	15,819	15,495
	Watt	63.9	64.9	83.2	85	106.7	109.4
	Efficacy	155	152	152	147	148	142
	Input Current (A)	120V = 0.53	120V = 0.54	120V = 0.69	120V = 0.71	120V = 0.89	120V = 0.91
240V = 0.27		240V = 0.27	240V = 0.35	240V = 0.35	240V = 0.44	240V = 0.46	
277V = 0.23		277V = 0.23	277V = 0.30	277V = 0.31	277V = 0.39	277V = 0.39	

Series	Measurements	Low Lumens		Mid Lumens		High Lumens	
		4000k	5000k	4000k	5000k	4000k	5000k
20-HBLASR-241815L-4K5K	Lumens	15,038	15,043	17,959	17,769	23,645	23,141
	Watt	95.21	96.61	115.38	117.13	157.28	160.36
	Efficacy	158	156	156	152	150	144
	Input Current (A)	120V = 0.79	120V = 0.81	120V = 0.96	120V = 0.98	120V = 1.31	120V = 1.34
240V = 0.40		240V = 0.40	240V = 0.48	240V = 0.49	240V = 0.66	240V = 0.67	
277V = 0.34		277V = 0.35	277V = 0.42	277V = 0.42	277V = 0.57	277V = 0.58	

Series	Measurements	Low Lumens		Mid Lumens		High Lumens	
		4000k	5000k	4000k	5000k	4000k	5000k
20-HBLASR-302418L-4K5K	Lumens	19,469	19,158	25,457	24,825	31,090	30,160
	Watt	120.8	122.6	162.5	165.4	205.3	209.8
	Efficacy	161	156	157	150	151	144
	Input Current (A)	120V = 1.01	120V = 1.02	120V = 1.35	120V = 1.38	120V = 1.71	120V = 1.75
240V = 0.50		240V = 0.51	240V = 0.68	240V = 0.69	240V = 0.86	240V = 0.87	
277V = 0.44		277V = 0.44	277V = 0.59	277V = 0.60	277V = 0.74	277V = 0.76	

PROJECT
TYPE
CATALOG #

# 20-HBLASR

SENSOR READY ADJUSTABLE HIGH BAY LUMEN & KELVIN SELECTABLE

## PHOTOMETRIC DATA

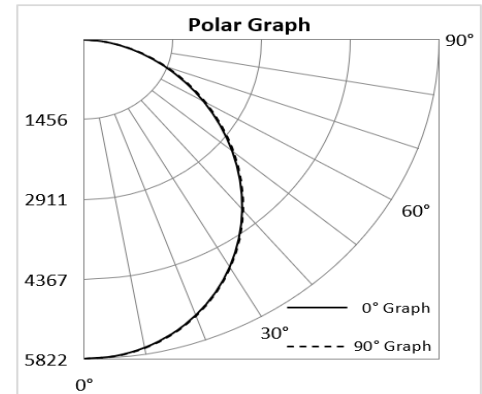
### 20-HBLASR-15129L-4K5K

#### Luminaire Data

Description	Adjustable High Bay Lumen/Kelvin Selectable
Total Lumens	15,495
Input Wattage	109
Efficacy (lm/W)	142
Spacing Criterion (0-180°)	1.24
Spacing Criterion (90-270°)	1.24

Photometrics calculated at 5000k - high lumens setting

Zonal Lumen Summary		
Zone	Lumens	%Fixt
0-20°	2,114	13.6%
0-30°	4,449	28.7%
0-40°	7,199	46.5%
20-50°	7,851	50.7%
40-70°	6,974	45.0%
0-60°	12,380	79.9%
0-80°	15,208	98.2%
0-90°	15,495	100.0%
90-180°	0	0.0%
0-180°	15,495	100.0%



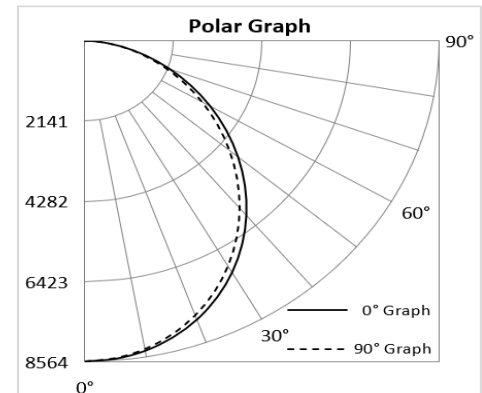
### 20-HBLASR-241815L-4K5K

#### Luminaire Data

Description	Adjustable High Bay Lumen/Kelvin Selectable
Total Lumens	23,141
Input Wattage	160
Efficacy (lm/W)	144
Spacing Criterion (0-180°)	1.24
Spacing Criterion (90-270°)	1.22

Photometrics calculated at 5000k - high lumens setting

Zonal Lumen Summary		
Zone	Lumens	%Fixt
0-20°	3,112	13.4%
0-30°	6,559	28.3%
0-40°	10,633	45.9%
20-50°	11,637	50.3%
40-70°	10,444	45.1%
0-60°	18,367	79.4%
0-80°	22,662	97.9%
0-90°	23,111	99.9%
90-180°	30	0.1%
0-180°	23,141	100.0%



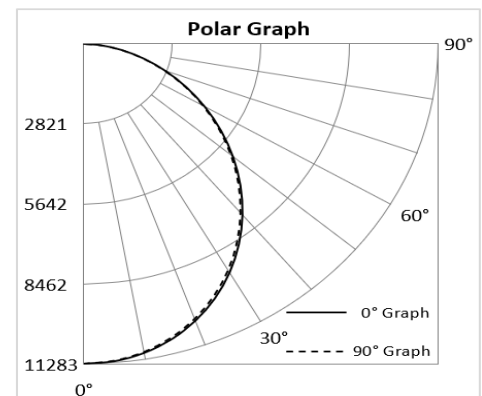
### 20-HBLASR-302418L-4K5K

#### Luminaire Data

Description	Adjustable High Bay Lumen/Kelvin Selectable
Total Lumens	30,160
Input Wattage	210
Efficacy (lm/W)	144
Spacing Criterion (0-180°)	1.24
Spacing Criterion (90-270°)	1.22

Photometrics calculated at 5000k - high lumens setting

Zonal Lumen Summary		
Zone	Lumens	%Fixt
0-20°	4,097	13.6%
0-30°	8,625	28.6%
0-40°	13,965	46.3%
20-50°	15,249	50.6%
40-70°	13,595	45.1%
0-60°	24,055	79.8%
0-80°	29,583	98.1%
0-90°	30,160	100.0%
90-180°	0	0.0%
0-180°	30,160	100.0%





PROJECT
TYPE
CATALOG #

# 20-HBLASR

SENSOR READY ADJUSTABLE HIGH BAY LUMEN & KELVIN SELECTABLE

## CORDS & PLUGS

When ordering a plug, use the following suffix choices.

Example: 20-HBLASR-15129L-4K5K-P515

Note: plugs do not affect the ability to install sensors.

Part number suffix	Description	For use with
6C3	6' cord - 3 conductor (black/white/green)	Standard & UNC
6C4	6' cord - 4 conductor (black/white/green/red)	EM driver
6C5	6' cord - 5 conductor (black/white/green/purple/pink)	Dimming (standard & UNC)
6C6	6' cord - 6 conductor (black/white/green/red/purple/pink)	Dimming & EM driver
10C3	10' cord - 3 conductor (black/white/green)	Standard & UNC
10C4	10' cord - 4 conductor (black/white/green/red)	EM driver
10C5	10' cord - 5 conductor (black/white/green/purple/pink)	Dimming (standard & UNC)
10C6	10' cord - 6 conductor (black/white/green/red/purple/pink)	Dimming & EM driver
15C3	15' cord - 3 conductor (black/white/green)	Standard & UNC
15C4	15' cord - 4 conductor (black/white/green/red)	EM driver
15C5	15' cord - 5 conductor (black/white/green/purple/pink)	Dimming (standard & UNC)
15C6	15' cord - 6 conductor (black/white/green/red/purple/pink)	Dimming & EM driver
6W3	6' whip - 3 conductor (black/white/green)	Standard & UNC
6W4	6' whip - 4 conductor (black/white/green/red)	EM driver
6W5	6' whip - 5 conductor (black/white/green/purple/pink)	Dimming (standard & UNC)
6W6	6' whip - 6 conductor (black/white/green/red/purple/pink)	Dimming & EM driver
6P515	6' cord - 3 conductor (black/white/green) - NEMA 5-15 plug (120V/15A)	Standard luminaire
6P615	6' cord - 3 conductor (black/white/green) - NEMA 6-15 plug (240V/15A)	Standard luminaire
6P715	6' cord - 3 conductor (black/white/green) - NEMA 7-15 plug (277V/15A)	Standard luminaire
6P520	6' cord - 3 conductor (black/white/green) - NEMA 5-20 plug (120V/20A)	Standard luminaire
6P620	6' cord - 3 conductor (black/white/green) - NEMA 6-20 plug (277V/20A)	Standard luminaire
6P515L	6' cord - 3 conductor (black/white/green) - NEMA L5-15 plug (120V/15A locking)	Standard luminaire
6P615L	6' cord - 3 conductor (black/white/green) - NEMA L6-15 plug (240V/15A locking)	Standard luminaire
6P715L	6' cord - 3 conductor (black/white/green) - NEMA L7-15 plug (277V/15A locking)	Standard luminaire
6P520L	6' cord - 3 conductor (black/white/green) - NEMA L5-20 plug (120V/20A locking)	Standard luminaire
6P620L	6' cord - 3 conductor (black/white/green) - NEMA L6-20 plug (240V/20A locking)	Standard luminaire
6P720L	6' cord - 3 conductor (black/white/green) - NEMA L7-20 plug (277V/20A locking)	Standard luminaire
6P2420L	6' cord - 3 conductor (black/white/green) - NEMA L24-20 plug (347V/20A locking)	UNC luminaire
6P820L	6' cord - 3 conductor (black/white/green) - NEMA L8-20 plug (480V/20A locking)	UNC luminaire
10P515	10' cord - 3 conductor (black/white/green) - NEMA 5-15 plug (120V/15A)	Standard luminaire
10P615	10' cord - 3 conductor (black/white/green) - NEMA 6-15 plug (240V/15A)	Standard luminaire
10P715	10' cord - 3 conductor (black/white/green) - NEMA 7-15 plug (277V/15A)	Standard luminaire
10P520	10' cord - 3 conductor (black/white/green) - NEMA 5-20 plug (120V/20A)	Standard luminaire

PROJECT
TYPE
CATALOG #

# 20-HBLASR

SENSOR READY ADJUSTABLE HIGH BAY LUMEN & KELVIN SELECTABLE

Part number suffix	Description	For use with
10P620	10' cord - 3 conductor (black/white/green) - NEMA 6-20 plug (277V/20A)	Standard luminaire
10P515L	10' cord - 3 conductor (black/white/green) - NEMA L5-15 plug (120V/15A locking)	Standard luminaire
10P615L	10' cord - 3 conductor (black/white/green) - NEMA L6-15 plug (240V/15A locking)	Standard luminaire
10P715L	10' cord - 3 conductor (black/white/green) - NEMA L7-15 plug (277V/15A locking)	Standard luminaire
10P520L	10' cord - 3 conductor (black/white/green) - NEMA L5-20 plug (120V/20A locking)	Standard luminaire
10P620L	10' cord - 3 conductor (black/white/green) - NEMA L6-20 plug (240V/20A locking)	Standard luminaire
10P720L	10' cord - 3 conductor (black/white/green) - NEMA L7-20 plug (277V/20A locking)	Standard luminaire
10P2420L	10' cord - 3 conductor (black/white/green) - NEMA L24-20 plug (347V/20A locking)	UNC luminaire
10P820L	10' cord - 3 conductor (black/white/green) - NEMA L8-20 plug (480V/20A locking)	UNC luminaire
15P515	15' cord - 3 conductor (black/white/green) - NEMA 5-15 plug (120V/15A)	Standard luminaire
15P615	15' cord - 3 conductor (black/white/green) - NEMA 6-15 plug (240V/15A)	Standard luminaire
15P715	15' cord - 3 conductor (black/white/green) - NEMA 7-15 plug (277V/15A)	Standard luminaire
15P520	15' cord - 3 conductor (black/white/green) - NEMA 5-20 plug (120V/20A)	Standard luminaire
15P620	15' cord - 3 conductor (black/white/green) - NEMA 6-20 plug (277V/20A)	Standard luminaire
15P515L	15' cord - 3 conductor (black/white/green) - NEMA L5-15 plug (120V/15A locking)	Standard luminaire
15P615L	15' cord - 3 conductor (black/white/green) - NEMA L6-15 plug (240V/15A locking)	Standard luminaire
15P715L	15' cord - 3 conductor (black/white/green) - NEMA L7-15 plug (277V/15A locking)	Standard luminaire
15P520L	15' cord - 3 conductor (black/white/green) - NEMA L5-20 plug (120V/20A locking)	Standard luminaire
15P620L	15' cord - 3 conductor (black/white/green) - NEMA L6-20 plug (240V/20A locking)	Standard luminaire
15P720L	15' cord - 3 conductor (black/white/green) - NEMA L7-20 plug (277V/20A locking)	Standard luminaire
15P2420L	15' cord - 3 conductor (black/white/green) - NEMA L24-20 plug (347V/20A locking)	UNC luminaire
15P820L	15' cord - 3 conductor (black/white/green) - NEMA L8-20 plug (480V/20A locking)	UNC luminaire

## DIMENSIONAL DRAWINGS

