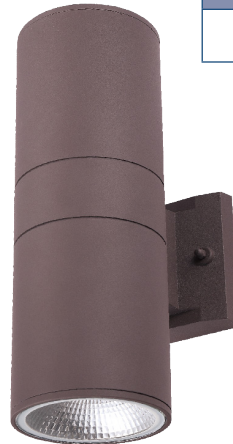


08-CYL-UPDN

UP/DOWN CYLINDER LUMINAIRE

APPLICATIONS

The 08-CYLUPDN Up and Down Cylinder Wall Fixture in a bronze finish offers exceptional performance while reducing energy and maintenance costs on lighting applications. Great for use in commercial and residential applications such as warehouses, walkways, entry doorways, and recreational areas.



PROJECT
TYPE
CATALOG #



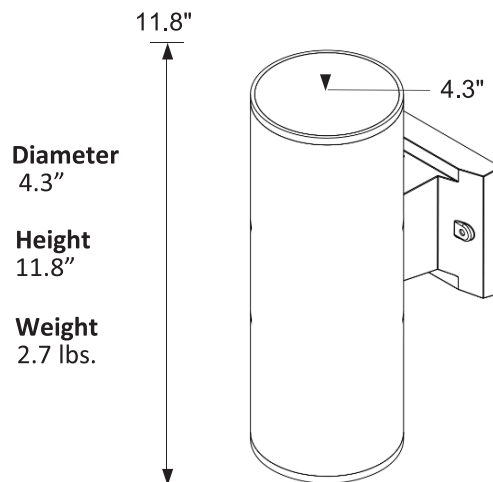
FEATURES

- Available in 3000k (warm white), 4000k (neutral white), and 5000k (cool white) color
- Long life LEDs provide up to 153,000 hours of operation with at least 70% of initial lumen output (L₇₀).**
- 07-CYLUPDN provides a range of 2,446 to 2,509 nominal lumens and 82 lumens per watt (lm/W*)
- Internal switch allows a choice of down light or up/down light
- 120 AC voltage (50/60Hz) is standard
- Power factor 0.90
- Color rendering index > 80
- Aluminum housing and glass lenses
- Dark bronze power coat finish
- Easy installation in new construction or retrofit

WARRANTY/LISTING

- cETLus listed for wet locations
- Energy Star qualified
- Complies with FCC Part 15, Class B
- Complies with EN61000 4 5, surge immunity protection (1kV)
- RoHS compliant
- 5-Year warranty of all electronics and housing

DIMENSIONS



PRODUCT PARAMETER

MODEL	NOMINAL LUMEN OUTPUT		COLOR TEMPERATURE		VOLTAGE	
			3K	4000k	120V	120 Volts
08-CYLUPDN	2L	2,000 lumens	3000k	4000k	120V	120 Volts
			4000k	5000k		
			5000k			

PROJECT
TYPE
CATALOG #

08-CYL-UPDN

UP/DOWN CYLINDER LUMINAIRE

ELECTRICAL DATA

Model	Color Temp.	CRI ¹	Luminaire Lumens	Luminaire Watts	Lumens Per Watt	Input Voltage	Input Current (A)			Power Factor	THD ²	L ₇₀ Hours ³
							120V	240V	277V			
08-CYL-UPDN-2L-3K-120V	3000k	> 80	2,446	30	82	120V	0.25	N/A	N/A	> 90%	< 50%	153,000
08-CYL-UPDN-2L-4K-120V	4000k	> 80	2,467	30	82	120V	0.25	N/A	N/A	> 90%	< 50%	153,000
08-CYL-UPDN-2L-5K-120V	5000k	> 80	2,509	30	82	120V	0.25	N/A	N/A	> 90%	< 50%	156,000

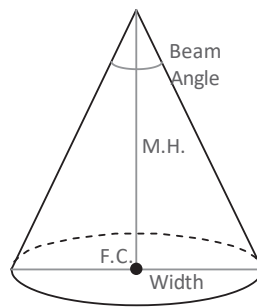
PHOTOMETRIC DATA

08-CYL-UPDN-2L-5K-120V

Luminaire Data

Description	Up/Down Cylinder, 3K
Total Lumens	2,509
Input Wattage	30
Efficacy (lm/W)	82
Beam Angle	H=45.1, V=45.1
Field Angle	H=86.9, V=86.9

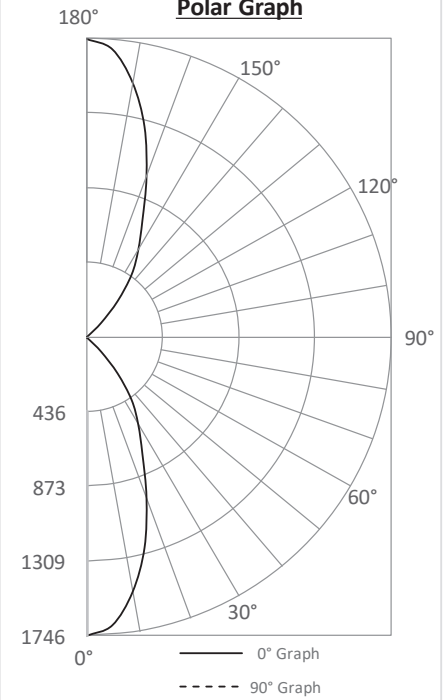
Cone of Light



Candela Table (lm)

Angle	lm
0°	1,746
10°	1,512
20°	997
30°	589
40°	277
50°	22
60°	6
70°	4
80°	4
90°	0
100°	4
110°	4
120°	6
130°	22
140°	277
150°	589
160°	997
170°	1,512
180°	1,745

Polar Graph



Zonal Lumen Summary

Zone	Lumens	%Fixt
0-20°	506	20.2%
0-30°	858	34.2%
0-40°	1,131	45.1%
0-60°	1,243	49.6%
0-80°	1,253	49.9%
0-90°	1,254	50.0%
90-180°	1,254	50.0%
0-180°	2,509	100.0%

M.H.	F.C.	Width
4'	109	3.3'
6'	48	5.0'
8'	27	6.6'
10'	17	8.3'
12'	12	10.0'
14'	9	11.6'
16'	7	13.3'