



PROJECT
TYPE
CATALOG #

3½" LED Recessed Housings

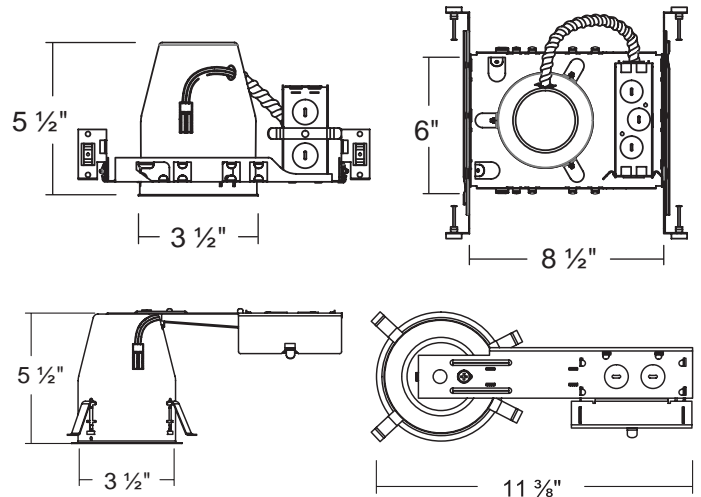
APPLICATIONS

3½" LED Recessed Housings are designed for LED trims and modules and are adaptable for remodel and new construction applications.

Durable galvanized steel construction contains one 1½", six ⅞" knockouts and four romex pryouts with strain relief.

FEATURES

- Dedicated housings for LED trims and modules.
- 2-pin snap-on connector for easy connection to LED trims/modules.
- Four clips on remodel cans provided to secure to housing and accommodate ½" and ⅝" ceilings.
- Bar hangers on new construction models are adjustable from 13⅝" to 25" and can be repositioned 90° on plaster frame.
- Pre-installed real nail on new model easily installs in regular and engineered lumber.
- Galvanized steel construction.
- Contains one 1½", six ⅞" knockouts and four romex pryouts with strain relief.
- Housing on new construction model can be removed from frame to provide access to the junction box.
- cULus listed for damp locations.
- Certified under ASTM-E283 for air tight construction.
- Operating temperatures of -30°C to 40°C.
- Meets State of California Title 24 requirements.
- 5 year warranty



MODEL	DESCRIPTION
06-3C-LEDNIC-AT-N	3½" Dedicated LED IC housing for new construction applications
06-3C-LEDRIC-AT-N	3½" Dedicated LED IC housing for remodel applications