



**CONTRACTOR
LIGHTING & SUPPLY**

WWW.CONTRACTORLIGHTING.COM

PROJECT
TYPE
CATALOG #

3½" Recessed LED Retrofit Trims

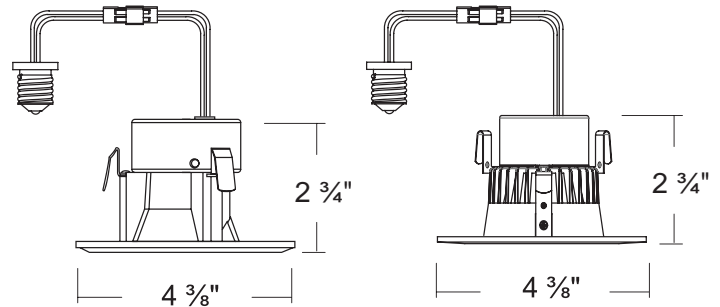
APPLICATIONS

Ideal for both remodel or new construction applications, our 3½" LED Retrofit trims are compatible with most 3½" recessed standard housings. The kit comes with a detachable screw-in base connector for easy installation into standard incandescent sockets.

The high-quality and high power LEDs produce 600+ lumens at a 3000K color temperature with just 9 watts of power consumption and is dimmable down to 5% with most industry dimmers.

FEATURES

- Long Life LEDs with up to 50,000 hours at 70% lumen maintenance.
- Dimmable with most standard incandescent and low voltage dimmers.
- Built in LED driver with 120V input voltage.
- Easy installation with adjustable torsion spring.
- Torsion spring is designed to fit into 3½" housing automatically without changing mounting tab.
- No tools required for installation.
- White painted die-cast housing construction.
- Oversized trim ring constructed from one-piece die-cast.
- E26 medium screw-base Edison connector provides easy retrofit of incandescent housings.
- Tested in accordance with IESNA LM79 & LM80.
- cULus Listed for damp and wet locations (not suitable for coastal/salt water area)
- Energy Star qualified.
- Operating temperatures of -30°C to 40°C.
- Meets State of California Title 24 requirements.
- 5 year warranty



MODEL	DESCRIPTION	WATTS	LUMENS	CRI
06-3RKT-BW-3K	3.5" LED Round Baffle Retrofit Kit	8.6	636	≥90
06-3RKT-SBW-3K	3.5" LED Square Baffle Retrofit Kit	8.6	636	≥90



PROJECT
TYPE
CATALOG #

3½" LED Recessed Housings

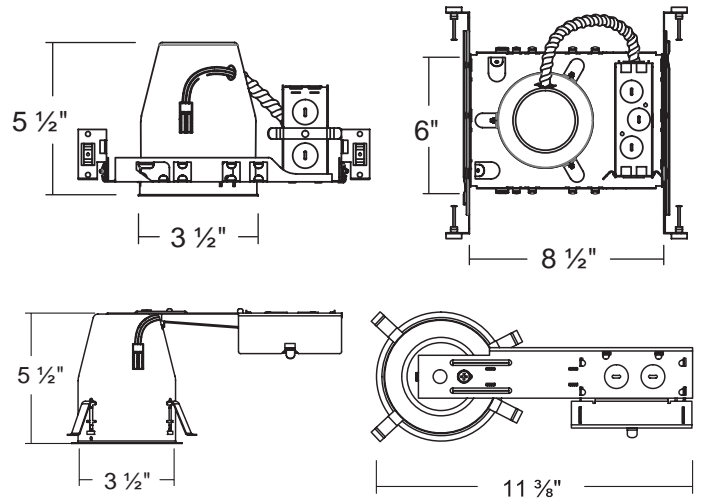
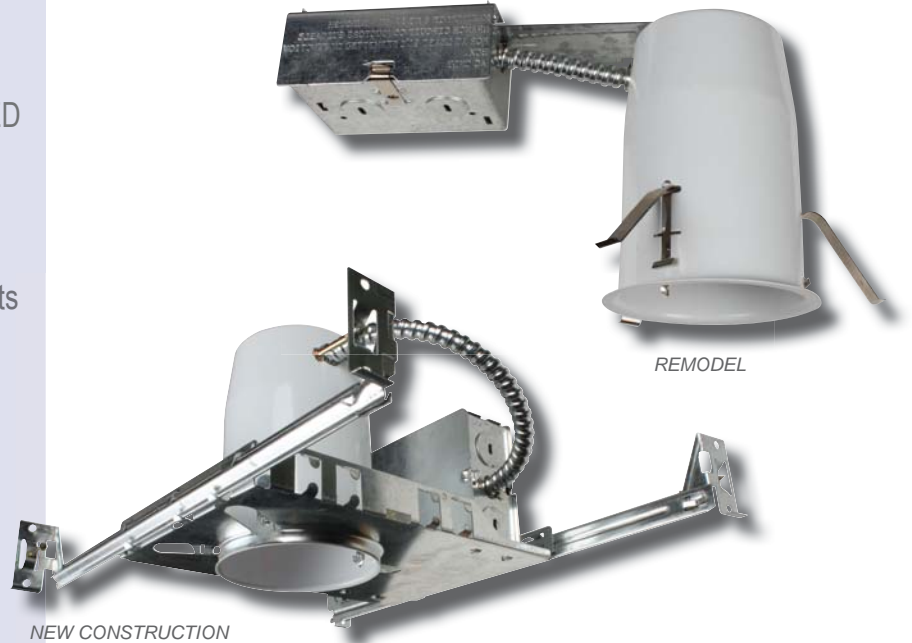
APPLICATIONS

3½" LED Recessed Housings are designed for LED trims and modules and are adaptable for remodel and new construction applications.

Durable galvanized steel construction contains one 1½", six ⅞" knockouts and four romex pryouts with strain relief.

FEATURES

- Dedicated housings for LED trims and modules.
- 2-pin snap-on connector for easy connection to LED trims/modules.
- Four clips on remodel cans provided to secure to housing and accommodate ½" and ⅝" ceilings.
- Bar hangers on new construction models are adjustable from 13⅝" to 25" and can be repositioned 90° on plaster frame.
- Pre-installed real nail on new model easily installs in regular and engineered lumber.
- Galvanized steel construction.
- Contains one 1½", six ⅞" knockouts and four romex pryouts with strain relief.
- Housing on new construction model can be removed from frame to provide access to the junction box.
- cULus listed for damp locations.
- Certified under ASTM-E283 for air tight construction.
- Operating temperatures of -30°C to 40°C.
- Meets State of California Title 24 requirements.
- 5 year warranty



MODEL	DESCRIPTION
06-3C-LEDNIC-AT-N	3½" Dedicated LED IC housing for new construction applications
06-3C-LEDRIC-AT-N	3½" Dedicated LED IC housing for remodel applications