



CONTRACTOR LIGHTING & SUPPLY

WWW.CONTRACTORLIGHTING.COM

PROJECT
TYPE
CATALOG #

06-BL8TCLD 8" LED ARCHITECTURAL CAN & FRAME-IN KIT

APPLICATIONS

The Energy Star 06-BL8TCLD series is a 8" commercial grade architectural can & frame-in kit. Built for commercial use with architectural frames and a deep cone reflector for precision light.

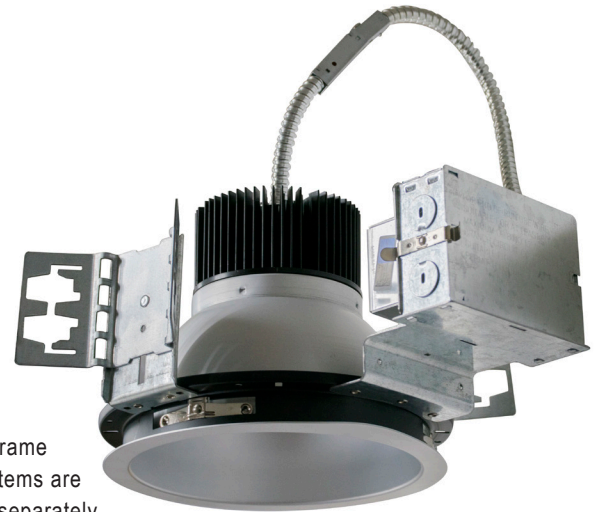
This high-efficiency luminaire provides long life - offered in two wattages and color temperatures.

FEATURES

- Architectural frames
- C channel and flat hanger bars for tie down to ceiling grids.
- 40 Watt available in 4000K
- 52 Watt available in 4000K
- Junction box is mounted on the frame for easy wiring, driver access for installation, and replacement
- Diecast aluminum heatsink dissipates heat from the LED board
- Self-flanged aluminum reflector with a frosted lens to shield direct view of LEDs
- Universal 120-277 AC voltage (50/60Hz)
- 0-10V dimming
- Color rendering index ≥ 80
- Long life LEDs - up to 50,000 hours
- Operation Temp. $-30^{\circ}\text{C} \sim 40^{\circ}\text{C}$ ($-22^{\circ}\text{F} \sim 104^{\circ}\text{F}$)

WARRANTY & LISTINGS

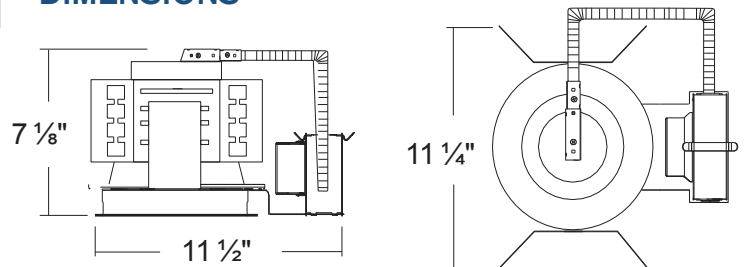
- cULus Listed
- ENERGY STAR® rated
- RoHS compliant
- 5-Year Warranty of all electronics and housing



Trim & Frame shown. Items are ordered separately.



DIMENSIONS



ORDERING INFORMATION

MODEL	LUMINAIRE WATTS	LUMINAIRE LUMENS	LUMENS PER WATT	COLOR TEMPERATURE	FRAME REQUIRED
06-BL8TCLD-40HZ-4K	28	3090	77	4000k	06-BL8TCLD-40HZ-4K
06-BL8TCLD-52HZ-4K	48	4530	87	4000k	06-BL8TCLD-52HZ-4K